

LA Series

In-line Linear Actuators

Innovative design for better life



- ✓ **Stainless Steel or aluminium**
- ✓ **5 size in diameter available: 26mm, 38mm, 52mm, 75mm*, 86mm***
- ✓ **High load capacity with precision and synchronous control**
- ✓ **IP Protection up to IP69K; water and dust proof (optional)**
- ✓ **Low energy consumption, low noise**
- ✓ **Suitable applications including home automation, medical devices, transportation and industrial automation**

* 75mm and 86 mm, datasheet on request (up to 28.000 N)

Product Overview



Table of Contents

PRODUCT OVERVIEW	1
ACTUATOR PART NUMBER CONFIGURATION.....	2
LA26NM IN-LINE LINEAR ACTUATOR Ø26MM	3
LA38M IN-LINE LINEAR ACTUATOR Ø38MM	5
LA52M IN-LINE LINEAR ACTUATOR Ø52MM	7
HALL EFFECTS	9
OVER-CURRENT PROTECTION	10
LIMIT SWITCH	10
ACCESSORIES- CONTROLBOX & HANDSET	11
ACCESSORIES- OTHERS.....	23

Astro Controls BV
Eikenlaan 235
2404 BP Alphen aan den Rijn
Tel: +31 172 - 42 42 47
E-mail: sales@astro.nl
www.astro.nl

Actuator Part Number Configuration

LA 38 M – S/S – L12 – 120 – 33 – 100 – H – K – O
 ① ② ③ ④ ⑤ ⑥ ⑦ ⑧ ⑨ ⑩ ⑪

- ① **Series name**
- ② **Diameter:** 26N= Ø26mm; 38= Ø38mm; 52= Ø52mm; 75= Ø75mm; 86= Ø86mm;
Outer Tube Material¹:
- ③ **AL=** T6063 Aluminium (black)
S/S= 304 or 316 Stainless steel (silver)
Model Option:
- ④ **L=** low-noise model (Only available on **LA38M**, depending on the loading capacity.
 Also the loaded speed will be changed slightly. *Please contact our technical support for details before placing your order.*
N = normal version
- ⑤ **Input voltage:** 12= 12VDC; 24=24VDC
- ⑥ **Load capacity (N)**
- ⑦ **Load speed (mm/s)**
- ⑧ **Stroke (mm)**
- ⑨ **Added Function²:**
C = Over-Current Protection
H = Hall Sensor
LSN = Limit Switch
LSS = Limit Switch with output signal
LSH = Limit Switch + Hall Sensor
LSC = Limit Switch + Over Current Protection
N= None
- ⑩ **Protection Class³:**
K = IP69K
N = IP66
- ⑪ **Mounting⁴:**
O = O type **B** = Ball Joint
C = Clevis **U** = Universal

Notes

- 1:** Not all materials listed are available on each model. Please refer to the specifications table for each model for details); any question, please contact our sales team for more details before placing the order.
(LA38M and LA52M are standard available in Stainless Steel, LA75M on request, could have a MOQ)
- 2:** Over-current protection function and Hall sensor function are **not** available at the same time;
- 3:** **IP69K** is available on the LA26NM, LA38M and LA52M
- 4:** O type and Clevis mount are standard options. Ball Joint and Universal could have a MOQ. Other options are available upon request. Contact us for more information.

LA26NM In-line Linear Actuator

Ø26mm

FEATURES

- Integrated with high-efficiency 12 / 24VDC brush motor and planetary gearbox
- Compact size and elegant design
- Up to IP69K protection class
- With optional built-in limit switch
- Wire types: flying leads; cable with 4-pin connector or 6-pin connector
- Applications: Ship/Yacht, window opening, furniture, industrial automation



Voltage	12VDC / 24VDC	Inner tube material	316 Stainless steel
Max. power	14,5W	Outer tube material	6063 Aluminium
Backlash	0.4mm	Lead screw material	Trapezoid, steel
Operating temperature	-20°C to +60°C	Nut material	Plastic
Storage temperature	-20°C to +60°C	Noise on load	62dB
Lifetime (cycle)	≥ 10k	End mounting	O-type
Duty cycle	2 minutes in use followed by 18 min rest	Wire length & option	1.5m length <ul style="list-style-type: none"> • Flying leads • With 4-pin connector • With 6-pin connector

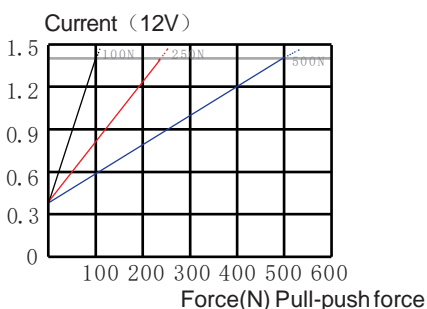
TECHNICAL SPECIFICATIONS

Maximum load (N)	100 ¹				250				500			
Self-locking force (N)	150				375				500			
No-load speed (mm/s)	16				11				6			
Load speed (mm/s)	11,5				7,5				4			
Standard stroke* (mm)	50	100	150	200	50	100	150	200	50	100	150	200
Weight (kg)	0.35	0.4	0.45	0.5	0.35	0.4	0.45	0.5	0.35	0.4	0.45	0.5
No-load current (A)	≤0.4 @ 12VDC / ≤0.2 @ 24VDC											
Load current (A)	≤1.3 @ 12VDC / ≤0.7 @ 24VDC											

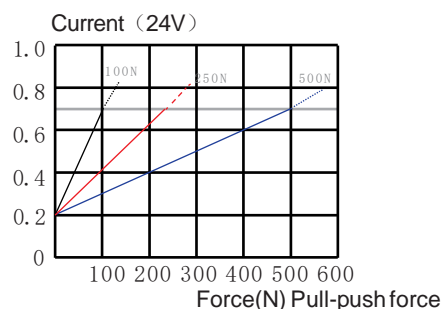
* Customised stroke may be available upon request. Available from minimum stroke 20mm to maximum stroke 200mm, precision: ±2mm

PERFORMANCE CURVES

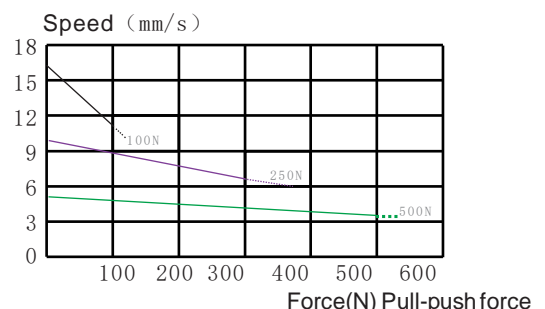
CURVE(Force/ current)



CURVE(Force/ current)



CURVE(Speed/force)



Note: Accuracy of speed or current: ±10%. In general, applications in the dashed area are not recommended

¹ 100N load option is not available when choosing limit switch function

LA38M In-line Linear Actuator

Φ38mm

FEATURES

- Compact size and elegant design in aluminium or 304 Stainless Steel
- IP66 or IP69K protection class
- Optional built-in Hall sensor ⁽¹⁾ for precision control
- Positioning control⁽¹⁾ is available as an option
- With optional built-in limit switch
- Over-current circuit protection as an option
- Wire types: flying leads; cable with 4-pin connector or 6-pin connector
- Applications: industrial automation, vehicle lifting, window opening



⁽¹⁾ **Notes:** Hall sensor function and positioning control are not available in the same actuator;
If Positioning control is chosen to control more than one actuator, actuators can only work synchronously

Voltage	12VDC / 24VDC	Max. power	60W
Duty cycle	2 minutes in use followed by 18 min rest	Outer tube material	<ul style="list-style-type: none"> • 6063 Aluminium • 316 Stainless steel
Life time (cycle)	10k	Inner tube material	316 Stainless steel
Backlash	0.5 - 1mm	Lead screw material	Trapezoid, steel
Operating temperature	-20°C to +60°C	Nut material	Plastic
Storage temperature	-40°C to +70°C	Wire length	1.5m
Noise on load ⁽²⁾	60dB ⁽²⁾	End mounting	O-type

⁽²⁾ For low-noise model, the noise level is **53dB**

TECHNICAL SPECIFICATIONS

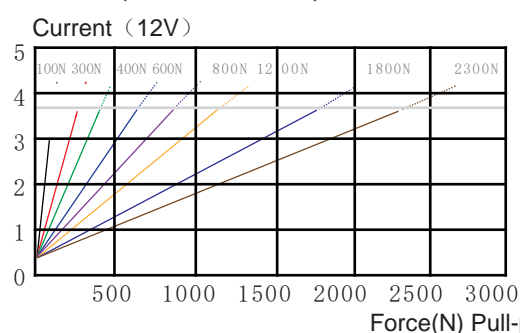
Maximum load (N)	100	300	400	600	800	1200	1800	2300
Self-locking force (N)	150	600	600	1600	1600	1800	3600	3450
No-load speed (mm/s)	35	25	18	12	12	6.8	4.5	3.5
Load speed (mm/s)	30 ⁽³⁾	17	14	9	8	5	3	2.5
Standard stroke⁽⁴⁾ (mm)	50 / 100 / 150 / 200 / 250 / 300 / 350 / 400							
No-load current (A)	≤0.6 @ 12VDC / ≤0.3 @ 24VDC							
Load current (A)	≤3.8 @ 12VDC / ≤1.8 @ 24VDC							

⁽³⁾ Load speed is different with low noise actuator, available upon request

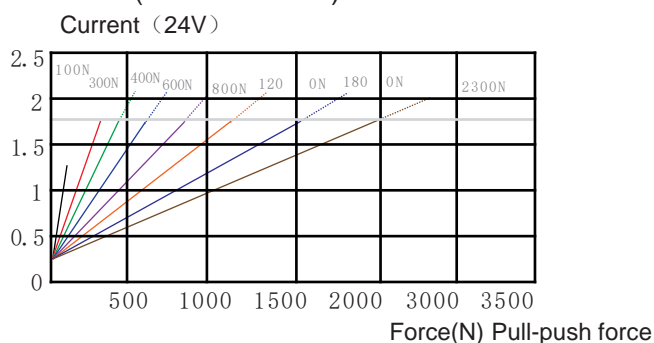
⁽⁴⁾ Customised stroke may be available upon request, available from 20mm to maximum 800mm, precision: ±2mm

PERFORMANCE CURVES

CURVE(Force/ current)

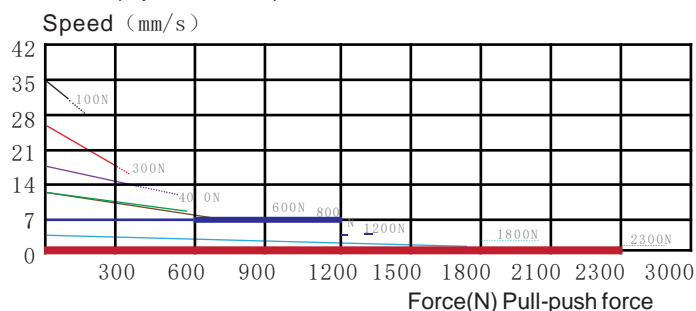


CURVE(Force/ current)

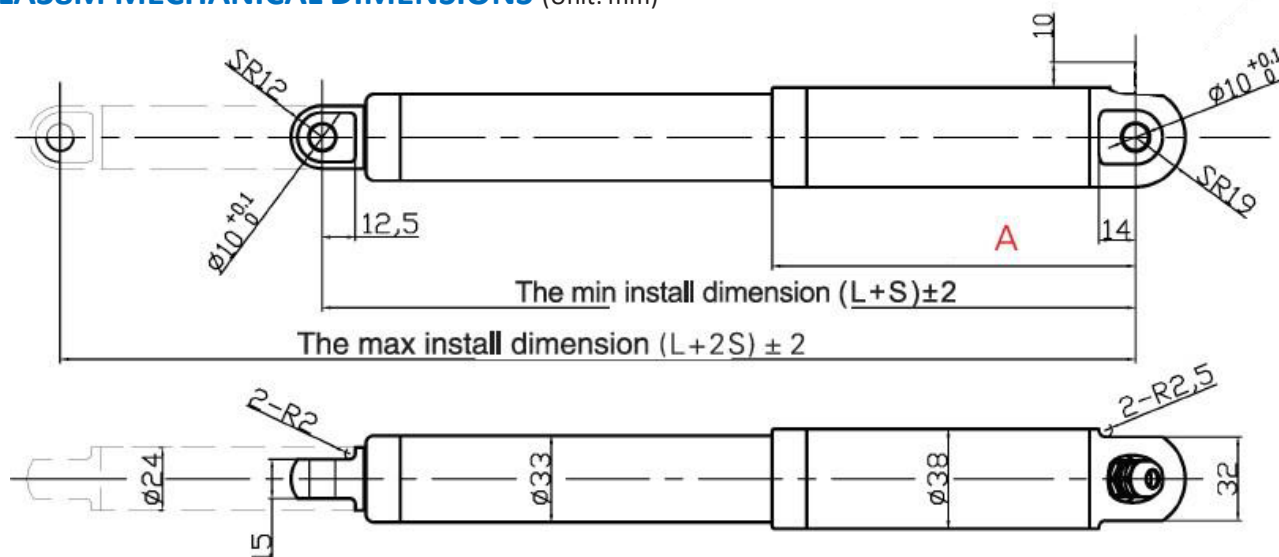


Note: Accuracy of speed or current: ±10%. In general, applications in the dashed area are not recommended

CURVE(Speed/force)



LA38M MECHANICAL DIMENSIONS (Unit: mm)



Notes: 1) S= Stroke

2) Dimensions above is for standard version and for reference only. Please contact us for accurate drawing information for each model before placing the order.

LA38M	Unit	Dimensions	Model with limit switch		Model with Hall Sensor		Model with Over-current Protection	
			Normal version	Low-noise version	Normal version	Low-noise version	Normal version	Low-noise version
Max. Load ≤800N	mm	L+S	200+S	210+S	220+S	220+S	220+S	230+S
		A	128.5	138.5	148.5	148.5	148.5	158.5
Max. Load >800N	mm	L+S	210+S	220+S	230+S	230+S	230+S	240+S
		A	138.5	148.5	158.5	158.5	158.5	168.5

- Notes:
- For IP69K the min. install length will be 20 mm longer.
 - Stroke over **400 mm**, longer minimum installation length, on request
 - Over-current protection and Hall sensor **cannot** be fitted at the same time in the actuator. The only way is to connect the over-current protection on the wiring or in the controlbox

MATCHED CONTROL BOX



Single-Actuator Controlbox

Duo-actuators Controlbox

Triple-actuators Controlbox

LA52M In-line Linear Actuator

Ø52mm

FEATURES

- Compact size and elegant design
- IP66 or IP69K
- Stainless Steel 316 Option
- Optional Hall sensors for precision control
- With optional built-in limit switch
- Applications: industrial machinery automation, smart home



Voltage	12VDC / 24VDC	Max. power	150W
Duty cycle	2 minutes in use followed by 18 min rest	Outer tube material	<ul style="list-style-type: none"> • 6063 Aluminium • 316 Stainless steel
Life time (cycle)	≥ 10k	Inner tube material	304 stainless steel
Backlash	0.5 - 1mm	Lead screw material	Trapezoid, steel
Operating temperature	-20°C to +60°C	Nut material	Plastic
Storage temperature	-40°C to +70°C	Wire length	1.5m
Noise on load	75dB	End mounting	O-type

TECHNICAL SPECIFICATIONS

Maximum load (N)	300	1200	1800	3000	4500	5000 ⁽¹⁾	6000
Self-locking force (N)	600	2400	3600	6000	8000	7500	8000
No-load speed (mm/s)	88	24	16	9.6	6.4	4.8	4.8
Load speed (mm/s)	55	15	10	6	4.5	3.3	3
Standard stroke⁽²⁾ (mm)	50 / 100 / 150 / 200 / 250 / 300 / 350 / 400						
No-load current (A)	≤1.6 @ 12VDC / ≤0.8 @ 24VDC						
Load current (A)	≤10 @ 12VDC / ≤5 @ 24VDC						

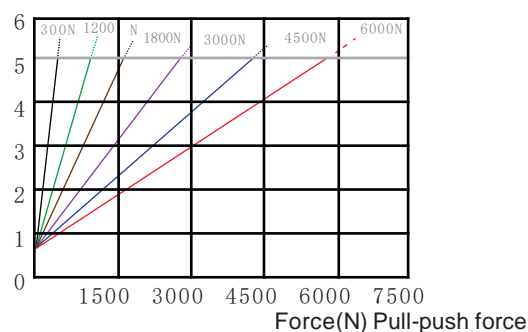
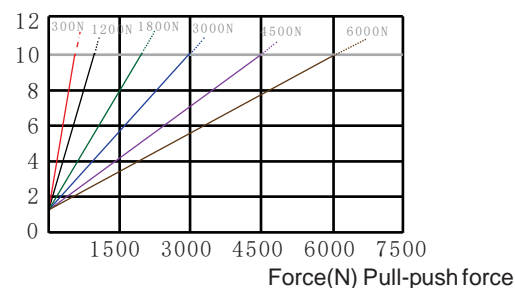
⁽¹⁾ 12VDC model has max. load of 5000N

⁽²⁾ Customised stroke may be available upon request. Available from minimum stroke 20mm to maximum stroke 800mm, precision: ±2mm

PERFORMANCE CURVES

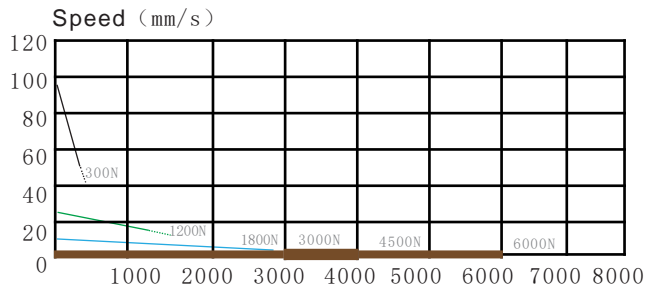
CURVE(Force/ current)

Current (12V)

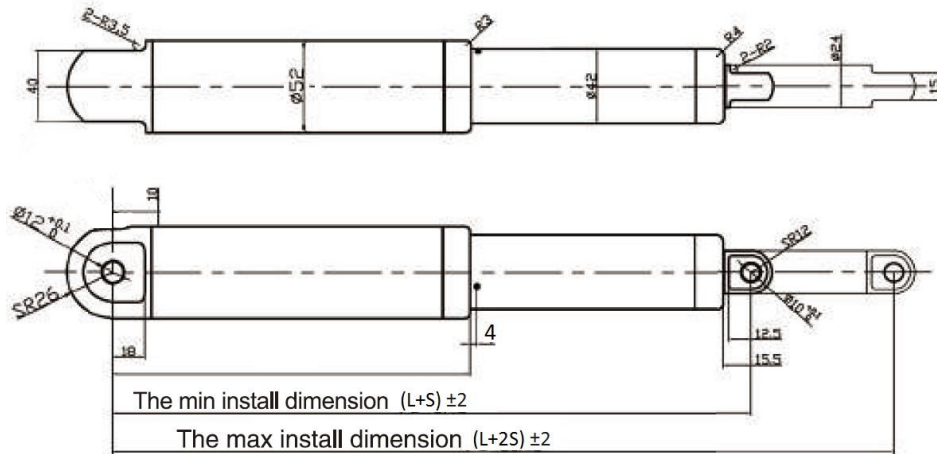


Note: Accuracy of speed or current: ±10%. In general, applications in the dashed area are not recommended

CURVE(Speed/force)



LA52M MECHANICAL DIMENSIONS (Unit: mm)



Notes: 1) S= Stroke

2) Dimensions above for reference only. Please contact us for accurate drawing information for each model before placing the order.

LA52M	Unit	Dimensions	Model with limit switch	Model with Hall Sensor	Model with Over-current Protection
	mm	L+S	305+S	325+S	325+S
		L2	201	221	221

Note: 1. For IP69K the min. install length will be 20 mm longer.

MATCHED CONTROL BOX



Single-Actuator Controlbox



Duo-actuators Controlbox



Triple-actuators Controlbox

Over-current Protection

Over current protection device is used to protect the motor from burning out when the actuator is in stall status for a long time. With over current protection, no damage will be occurred when the actuator travels to the end position. Over current protection can be used to disconnect the power supply when the actuator is over loaded.



TECHNICAL SPECIFICATIONS

Model	Circuit Breaking Current		
	LA26M	LA38M	LA52M
12VDC	1.5A	5.0 - 5.5A	14.0A
24VDC	0.7-0.8A	2.5 – 3.0A	7.0A

Notes:

1. The anode (+) and cathode (-) for input and output circuit can be interchangeable, input voltage is 12VDC or 24VDC.
2. The circuit breaking response time is 0.1-0.5s
3. The ambient temperature range is - 20°C to +60°C, and storage temperature is -40°C to +70°C
4. Max duty cycle is 10% or 2 minutes in use followed by 18 minutes rest
5. Over-loaded current protection function and Hall sensor function are not available at the same time.

Limit Switch

A limit switch is used to test whether an object moves to the limit position. The principle is that when the object touches the limit switch, the normally open point of the switch closes and the normally closed point turns off to control circuit or receive signals.

Notes:

1. Actuator size varies and to be advised separately upon request
2. Special accessories can be customised as required

Accessories- Controlbox & Handset

PART NUMBER CONFIGURATION

ST01 - S 2 - D 12 - 12 - W
 ① ② ③ ④ ⑤ ⑥ ⑦

① **Controlbox** Three options: ST01, ST02, ST03

② **Control function***

S: synchronous control, A: independent control;
 P: stroke positioning control)

③ **Number of actuators being controlled:**

1: One actuator; 2: Two actuators;
 3: three actuators

④ **Model Type:** B**: Rechargeable battery type;

D: DC Power input/output type;

T: Transformer AC power input type

⑤ **Input voltage:** 12VDC, 24VDC, 110VAC, 220-240VAC

⑥ **Output voltage:** 12VDC, 24VDC

⑦ **Handset (optional):** W: Wired

WL: Wireless

Notes: *: Maximum three actuators can be controlled (independently) via one controlbox.




Two actuators can be controlled (either synchronously or independently) via one controlbox.

Stroke positioning control is ONLY available on LA38M actuators. (DISCONTINUED)

****:** Battery type controlbox is ONLY available on LA26M & LA38M models **(DISCONTINUED)**

MODEL OVERVIEW

Controlbox Models

		
ST01 VDC input/output type (to control 1x actuator / 2x actuators)	ST02 (with optional battery level indicator) Built-in battery or AC transformer (to control 1x actuator / 2x actuators)	ST03 (with optional battery level indicator) Built-in battery or AC transformer (to control 1x actuator / 2x actuators / 3x actuators)

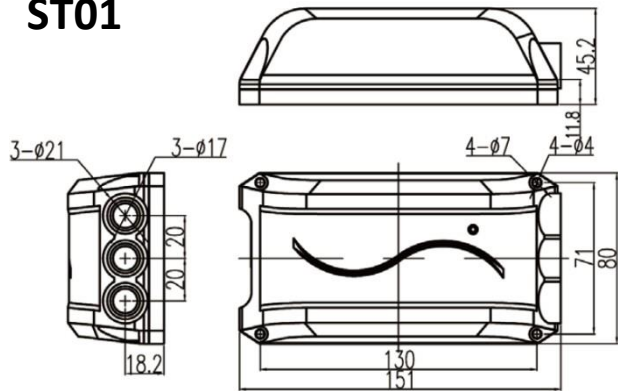
Handset Models

			
HS01 Wireless handset To control: <ul style="list-style-type: none"> 1x actuator 2x actuators synchronously 3x actuators independently 	HS02 Wireless handset To control: <ul style="list-style-type: none"> 2x actuators independently 	HS05 Wired handset To control: <ul style="list-style-type: none"> 1x actuator 2x actuators synchronously 	

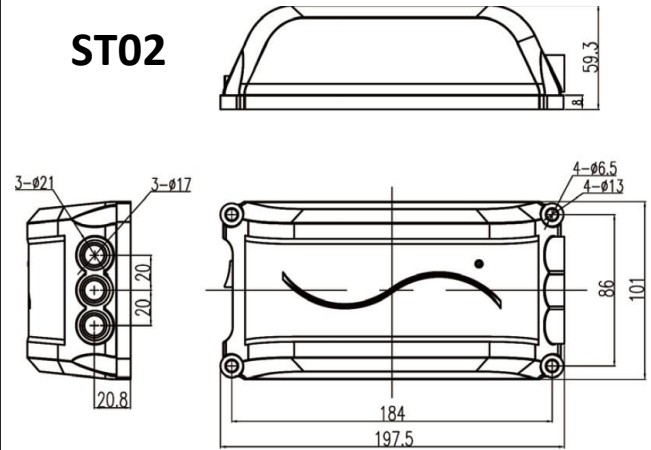
DIMENSIONS

(in mm)

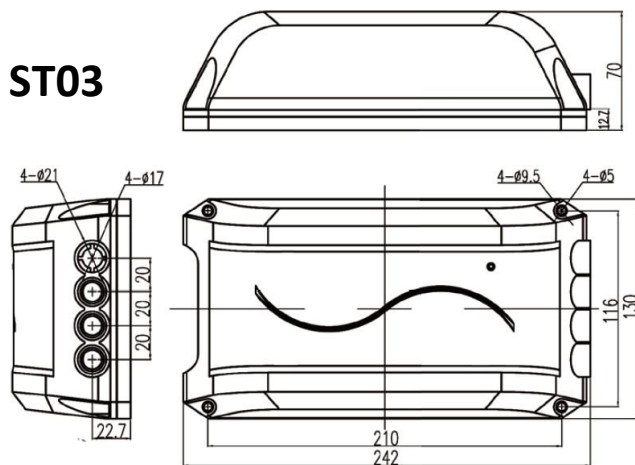
ST01



ST02



ST03



MODEL SPECIFICATIONS

• Single-Actuator Controlbox

CONTROLBOX

- **General function:**
Control the raising and lowering of the actuator. It has a light to show the power on or off
- **Rechargeable battery version:**
 1. Battery is built-in
 2. Battery capacity display function is available
- **Stroke positioning function option**
Preset the upper and lower limit position of the actuator. The accuracy is 1% of the actuator stroke length. The actuator can only work within the pre-set range.
- **Protection function:**
The controlbox has an over-current protection function. It will protect the actuator with no damage when there is a short circuit and the actuator will automatically recover after the short circuit fault is removed.

Controlbox Type	DC Power Input	Rechargeable Battery	Transformer AC Power Input
Available Model ¹	ST01-A1-D	ST02-A1-B	ST02-A1-T / ST03-A1-T
Controlbox Dimensions ¹	ST01	ST02	ST02 / ST03
Input Voltage	12/24 (VDC)	12/24 (VDC)	110-240VAC
Output voltage (VDC)	12/24	12/24	12/24
Output Power ¹	-	-	60W / 120W
Frequency	-	-	50-60Hz
Output ripple noise	-	-	≤ 280 mV p-p
Output voltage accuracy	95 (%)	95 (%)	95 (%)
Voltage regulation	± 5 (%)	± 5 (%)	± 5 (%)
Load Regulation	± 5 (%)	± 5 (%)	± 5 (%)
Work efficiency	85 (%)	85 (%)	85 (%)
Control accuracy ²	-	-	-
Use frequency	10%	10%	10%
Number of actuator controlled	1 piece	1 piece	1 piece
Ambient Temperature	5°C to 40°C	5°C to 40°C	5°C to 40°C
IP Protection Class	IP54	IP54	IP54
Case Material	Non-flammable ABS	Non-flammable ABS	Non-flammable ABS
Actuator output connector ²	Big DIN4P	Big DIN4P	Big DIN4P
Controlbox power input connector	-	-	8 suffix power cable
Remote handset frequency	433MH	433MH	433MH
Remote-control distance	≤ 10m	≤ 10m	≤ 10m
Wireless Remote Control Model ²	HS1		
Handset Connector	Big DIN	Big DIN	Big DIN
Handset Wire Length (m)	≤ 1.5m	≤ 1.5m	≤ 1.5m
Wired Handset Model	HS5		

NOTES: 1. ST02-A1-T with output power of 60W is suitable for **LA26M** and **LA38M** model
ST03-A1-T with output power of 120W is suitable for **LA52M** model

2. If for stroke positioning control, some parameters are changed to:

Control Accuracy: ± 1 %; Actuator output connector: Big DIN6P;

matched handset: HS4 (wired)

3. Wireless remote control handset and wired handset are optional

4. The charging voltage for the battery is 110vac -240vac; battery capacity: 2200mAh and is ONLY available on **LA26M** & **LA38M** models

- **Duo-Actuator Controlbox (for synchronous control)**

CONTROLBOX

- **General function:**
Control two actuators working synchronously;
Control the raising and lowering of the actuator. It has a light to show the power on or off
- **Rechargeable battery version:**
 - Battery is built-in
 - Battery capacity display function is available
- **Protection function:**
The controlbox has an over-current protection function. It will protect the actuator with no damage when there is a short circuit and the actuator will automatically recover after the short circuit fault is removed.

Controlbox Type	DC Power Input	Rechargeable Battery	Transformer AC Power Input
Available model ¹	ST01-S2-D	ST02-S2-B	ST02-S2-T / ST03-S2-T
Controlbox dimensions	ST01	ST02	ST02 / ST03
Input voltage	12/24 (VDC)	12/24 (VDC)	110-240VAC
Output voltage (VDC)	12/24	12/24	12/24
Output power	-	-	60W /120W/ 250W
Frequency	-	-	50-60HZ
Output ripple noise	-	-	≤ 280 mV p-p
Output voltage accuracy	95 (%)	95 (%)	95 (%)
Voltage regulation	± 5 (%)	± 5 (%)	± 5 (%)
Load regulation	± 5 (%)	± 5 (%)	± 5 (%)
Work efficiency	85 (%)	85 (%)	85 (%)
Control accuracy	± 1 (%)	± 1 (%)	± 1 (%)
Use frequency	10%	10%	10%
Number of actuator controlled	2 pieces	2 pieces	2 pieces
Ambient temperature	5°C to 40°C	5°C to 40°C	5°C to 40°C
IP grade	IP54	IP54	IP54
Material	Non-flammable ABS	Non-flammable ABS	Non-flammable ABS
Actuator output connector	Big DIN6P	Big DIN6P	Big DIN6P
Controlbox power input connector	-	-	8 suffix power cable
Remote handset frequency	433MH	433MH	433MH
Remote-control distance	≤ 10m	≤ 10m	≤ 10m
Wireless remote control handset	HS03	HS03	HS03
DIN6P Handset connector	Big DIN	Big DIN	Big DIN
Matched wired handset	HS05	HS05	HS05
Handset wire length (m)	≤ 1.5m	≤ 1.5m	≤ 1.5m

NOTES:

1. ST02-S2-T with output power of 60W is suitable for **LA26M**
ST03-S2-T with output power of 120W is suitable for **LA38M** model
ST03-S2-T with output power of 250W is suitable for **LA52M** model
2. Wireless remote control handset and wired handset are optional
3. The charging voltage for the battery is 110vac-240vac; battery capacity: 2200mAH and is **ONLY** available on **LA26M & LA38M** models

- **Due-Actuator Controlbox (for independent control)**

CONTROLBOX

- **General function:**
Control two actuators working asynchronously;
Control the raising and lowering of the actuator. It has a light to show the power on or off
- **Rechargeable battery version:**
 - Battery is built-in
 - Battery capacity display function is available
- **Protection function:**
The controlbox has an over-current protection function. It will protect the actuator with no damage when there is a short circuit and the actuator will automatically recover after the short circuit fault is removed.

Controlbox Type	DC Power Input	Rechargeable Battery	Transformer AC Power Input
Available Model ¹	ST01-A2-D	ST02-A2-B	ST02-A2-T / ST03-A2-T
Controlbox Dimensions	ST01	ST02	ST02 / ST03
Input Voltage	12/24 (VDC)	12/24 (VDC)	110-240VAC
Output voltage (VDC)	12 / 24	12 / 24	12 / 24
Output Power	-	-	60W / 120W
Frequency	-	-	50-60HZ
Output ripple noise	-	-	≤ 280 mV p-p
Output voltage accuracy	95 (%)	95 (%)	95 (%)
Voltage regulation	± 5 (%)	± 5 (%)	± 5 (%)
Load Regulation	± 5 (%)	± 5 (%)	± 5 (%)
Work efficiency	85 (%)	85 (%)	85 (%)
Control accuracy	-	-	-
Use frequency	10%	10%	10%
Number of actuator controlled	2 pieces	2 pieces	2 pieces
Ambient Temp	5°C to 40°C	5°C to 40°C	5°C to 40°C
IP grade	IP54	IP54	IP54
Material	Non-flammable ABS	Non-flammable ABS	Non-flammable ABS
Actuator output connector type	Big DIN4P	Big DIN4P	Big DIN4P
Controlbox power input connector	-	-	8 suffix power cable
Remote handset frequency	433MH	433MH	433MH
Remote-control distance	≤ 10m	≤ 10m	≤ 10m
Wireless Remote Control Model	HS01		

NOTES:

1. ST02-A2-T controlbox with output power of 60W is suitable for **LA26M** and **LA38M** model
ST03-A2-T controlbox with output power of 120W is suitable for **LA52M** model
2. Wireless remote control handset is optional
3. The charging voltage for the battery is 110vac-240vac; battery capacity: 2200mAH and is ONLY available on **LA26M** & **LA38M** models

- **Triple-Actuator Controlbox (for independent control)**

CONTROLBOX

- **General function:**
Control three actuators working independently;
Control the raising and lowering of the actuator. It has a light to show the power on or off
- **Rechargeable battery version:**
 - Battery is built-in
 - Battery capacity display function is available
- **Protection function:**
The controlbox has an over-current protection function. It will protect the actuator with no damage when there is a short circuit and the actuator will automatically recover after the short circuit fault is removed.

Controlbox Type	DC Power Input	Rechargeable Battery	Transformer AC Power Input
Available Model	ST03-A3-D	ST03-A3-B	ST03-A3-T
Controlbox Dimensions	ST03	ST03	ST03
Input Voltage	12/24 (VDC)	12/24 (VDC)	110-240VAC
Output voltage (VDC)	12 / 24	12 / 24	12 / 24
Output Power	-	-	120W
Frequency	-	-	50-60HZ
Output ripple noise	-	-	≤ 280 mV p-p
Output voltage accuracy	95 (%)	95 (%)	95 (%)
Voltage regulation	± 5 (%)	± 5 (%)	± 5 (%)
Load Regulation	± 5 (%)	± 5 (%)	± 5 (%)
Work efficiency	85 (%)	85 (%)	85 (%)
Control accuracy	-	-	-
Use frequency	10%	10%	10%
Number of actuator controlled	3 pieces	3 pieces	3 pieces
Ambient Temp	5°C to 40°C	5°C to 40°C	5°C to 40°C
IP grade	IP54	IP54	IP54
Material	Non-flammable ABS	Non-flammable ABS	Non-flammable ABS
Actuator output connector	Big DIN4P	Big DIN4P	Big DIN4P
Controlbox power input connector	-	-	8 suffix power cable
Remote handset frequency	433MH	433MH	433MH
Remote-control distance	≤ 10m	≤ 10m	≤ 10m
Wireless Remote Control Model	HS01		

NOTES:

- The charging voltage for the battery is 110vac -240vac, battery capacity: 2200mAh and is ONLY available on **LA26M, LA38M** models

Accessories- Others

Connectors



4-pin connector for standard (limit switch) or over-current protection models



6-pin connector for Hall function model

Binding Head Types



C type
(front)

(Standard type for LA35M model)



Universal joint type
(front)

(Optional)



O type
(front)

(Standard type for LA16/26/38/45/52M models)



Ball joint type
(front)

(Optional)



End
(Standard)

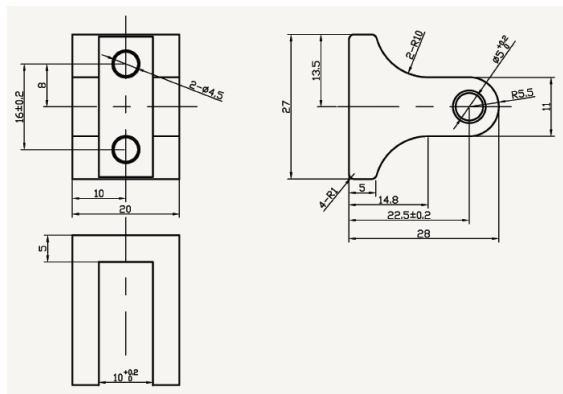
Notes: Standard type will be chosen and supplied by default, if the binding head type is not specified with the order.

Mounting Bracket

Model

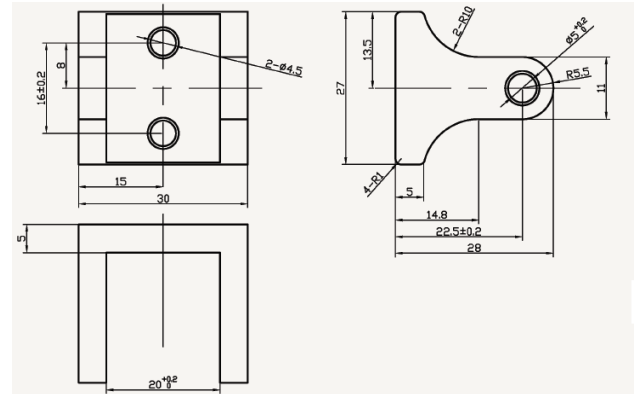
Front-end mounting bracket

LA26M



Part No.: 26F

Rear-end mounting bracket



Part No.: 26R

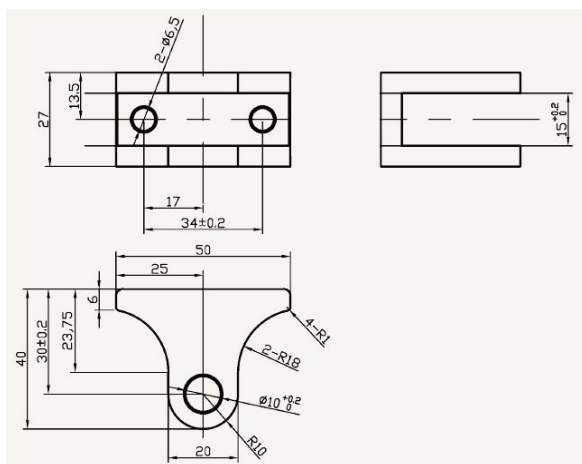
Mounting Bracket

Model

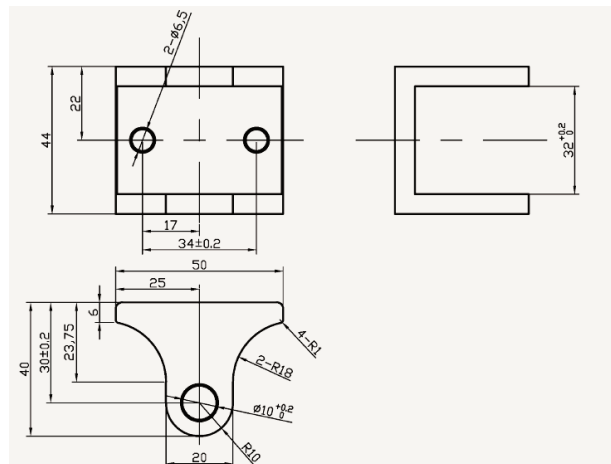
Front-end mounting bracket

Rear-end mounting bracket

LA38M

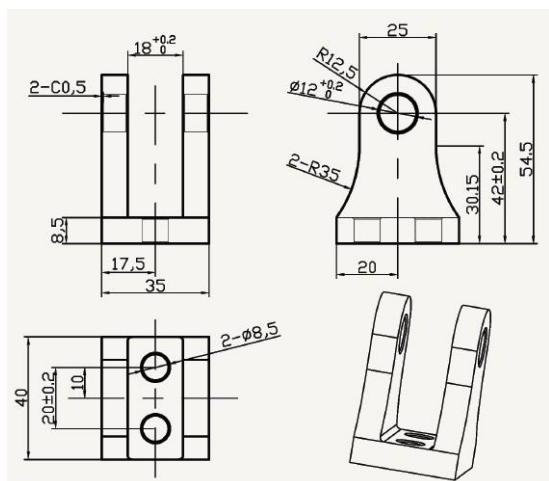


Part No.: 38F

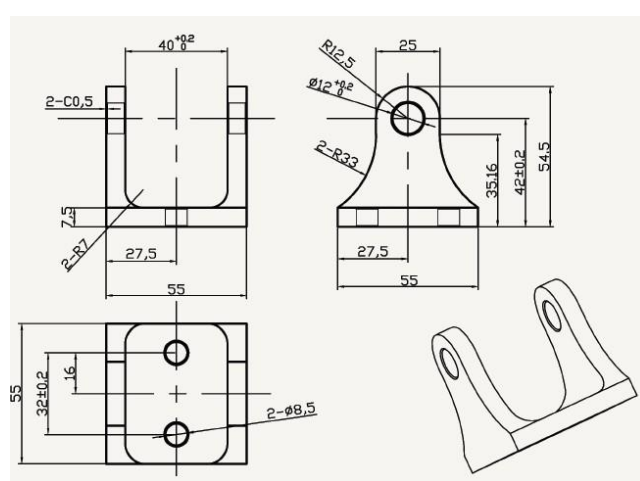


Part No.: 38R

LA52M



Part No.: 52F



Part No.: 52R